

à Xavier

sons et hauteurs réels

Ouvrage protégé
PHOTOCOPIE INTERDITE
Même partielle (Loi du 11 Mars 1957)
constituerait contrefaçon (code pénal Art. 425)

Complainte

pour

Quatuor de Saxophones

Henri LOCHE

Largo $\text{♩} = 48$

Saxophone Soprano
sons réels

Saxophone Alto
sons réels

Saxophone Ténor
sons réels

Saxophone Baryton
sons réels

mp *p*

mp *p*

mp *p*

mp *p*

5

rit. **1** Tempo

S. *p* *mf* *p*

A. *p* *mf* *p*

T. *p* *mf* *p*

B. *p* *p*

11 2

S. *p* *mf*

A. *p* *mf*

T. *p* *mf*

B. *p* *mf*

Detailed description: This system contains measures 11 through 16. It features four vocal staves: Soprano (S.), Alto (A.), Tenor (T.), and Bass (B.). Measures 11-14 are marked *p* (piano), and measures 15-16 are marked *mf* (mezzo-forte). The music is in a key with two flats (B-flat and E-flat) and a common time signature. The Soprano part has a melodic line with some rests. The Alto and Tenor parts have more active lines with eighth and sixteenth notes. The Bass part provides a harmonic foundation with longer note values.

17 3

S. *mp* *mf*

A. *p* *mf*

T. *p* *mf*

B. *p* *mf*

Detailed description: This system contains measures 17 through 21. The dynamics vary: measures 17-18 are *mp* (mezzo-piano), measures 19-20 are *p* (piano), and measure 21 is *mf* (mezzo-forte). The Soprano part has a melodic line with some rests. The Alto and Tenor parts have more active lines with eighth and sixteenth notes. The Bass part provides a harmonic foundation with longer note values.

22 rit.

S. *mf* *p*

A. *mf* *p*

T. *mf* *p*

B. *mf* *p*

Detailed description: This system contains measures 22 through 26. The dynamics are *mf* (mezzo-forte) for measures 22-23 and *p* (piano) for measures 24-26. The Soprano part has a melodic line with some rests. The Alto and Tenor parts have more active lines with eighth and sixteenth notes. The Bass part provides a harmonic foundation with longer note values. The system ends with a *rit.* (ritardando) marking.

4 Tempo

27

S. *mf* *mf* *p*

A. *mf* *mf* *p*

T. *mf* *mf* *p*

B. *mf* *mf* *p*

5

33

S. *mp*

A. *mp*

T. *mp*

B. *mp*

6

38

S. *p*

A. *p*

T. *p*

B. *p* quasi Pizz.

44

S. *mf*

A. *mp* *mf*

T. *mp* *mf*

B. *mf*

Rall.

8 Tempo

50

S. *p*

A. *p* *p*

T. *p* *p*

B. *p* *mp* *p*

rit.

9 Tempo

56

S. *p*

A. *p*

T. *p*

B. *p*

10

63

S. *p* *mf*

A. *p* *mf*

T. *p* *mf*

B. *p* *mf*

11

70

S. *p* *mp*

A. *p* *mp*

T. *p* *mp*

B. *p* *mp*

75

S. *mf*

A. *mf*

T. *mf*

B. *mf*

Complainte

pour
Quatuor de Saxophones

Henri LOCHE

Largo $\text{♩} = 48$

mp

p

rit.

5

p

mf

1 Tempo

9

p

p

14

2

mf

19

3

mp

mf

rit.

23

mf

p

4 Tempo

27

mf

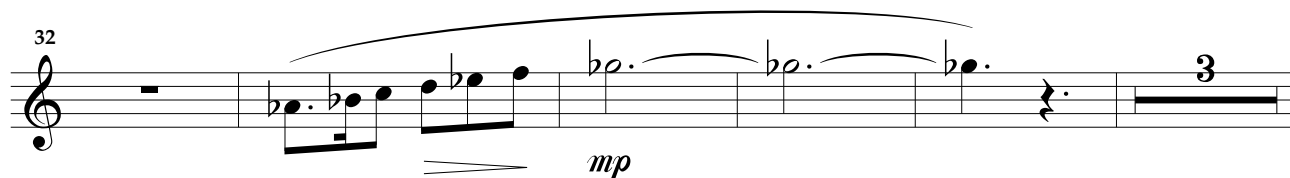
mf

p

S.

5

-3-



6



7



Rall.

8

Tempo



rit.

9

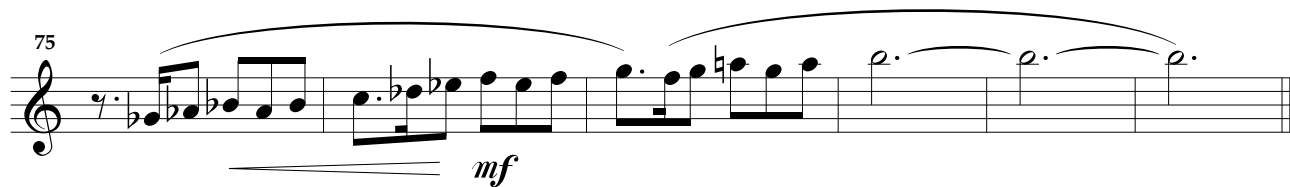
Tempo



10



11



Saxophone Alto Mi

à Xavier

Ouvrage protégé
PHOTOCOPIE INTERDITE
Même partielle (Loi du 11 Mars 1957)
constituerait contrefaçon (code pénal Art. 425)

Complainte

pour

Quatuor de Saxophones

Henri LOCHE

Largo $\text{♩} = 48$

mp

p

rit. 1 Tempo

p

mf

p

11

p

mf

17

p

mf

22

mf

p

mf

28

mf

p

34

5

mp

A.

[illegible]

Complainte

pour

Quatuor de Saxophones

Henri LOCHE

Largo ♩. = 48

mp p rit. 1 Tempo

p mf p

10 2 mf

16 p

3 21 mf mf p

rit. 4 Tempo

26 mf mf

31 5 p mp

DPV-AHL064

à Xavier

Saxophone Baryton Mi

Ouvrage protégé
PHOTOCOPIE INTERDITE
Même partielle (Loi du 11 Mars 1957)
constituerait contrefaçon (code pénal Art. 425)

Complainte

pour
Quatuor de Saxophones

Henri LOCHE

Largo ♩. = 48

mp *p* *p*

rit. **1** Tempo

p *p*

2 *mf*

3 *p* *mf* *mf* *p*

rit. **4** Tempo

mf *mf*

5 *p* *mp*

B.

-3-

37 6 *quasi Pizz.*
p

43 7
mf

48 *p*

54 *Rall.* 8 *Tempo*
mp p

60 *rit.* 9 *Tempo*
p

66 10
mf

72 11
p mp

76 *mf*